

DRAWING NUMBER
24-145

BILTMORE TERRACE

145

IN N 1/2 OF THE NE 1/4 OF THE SW 1/4 AND THE NW 1/4 OF THE SW 1/4 OF SEC. 12, TWP. 45 S, RGE. 42 E.
PALM BEACH COUNTY, FLORIDA

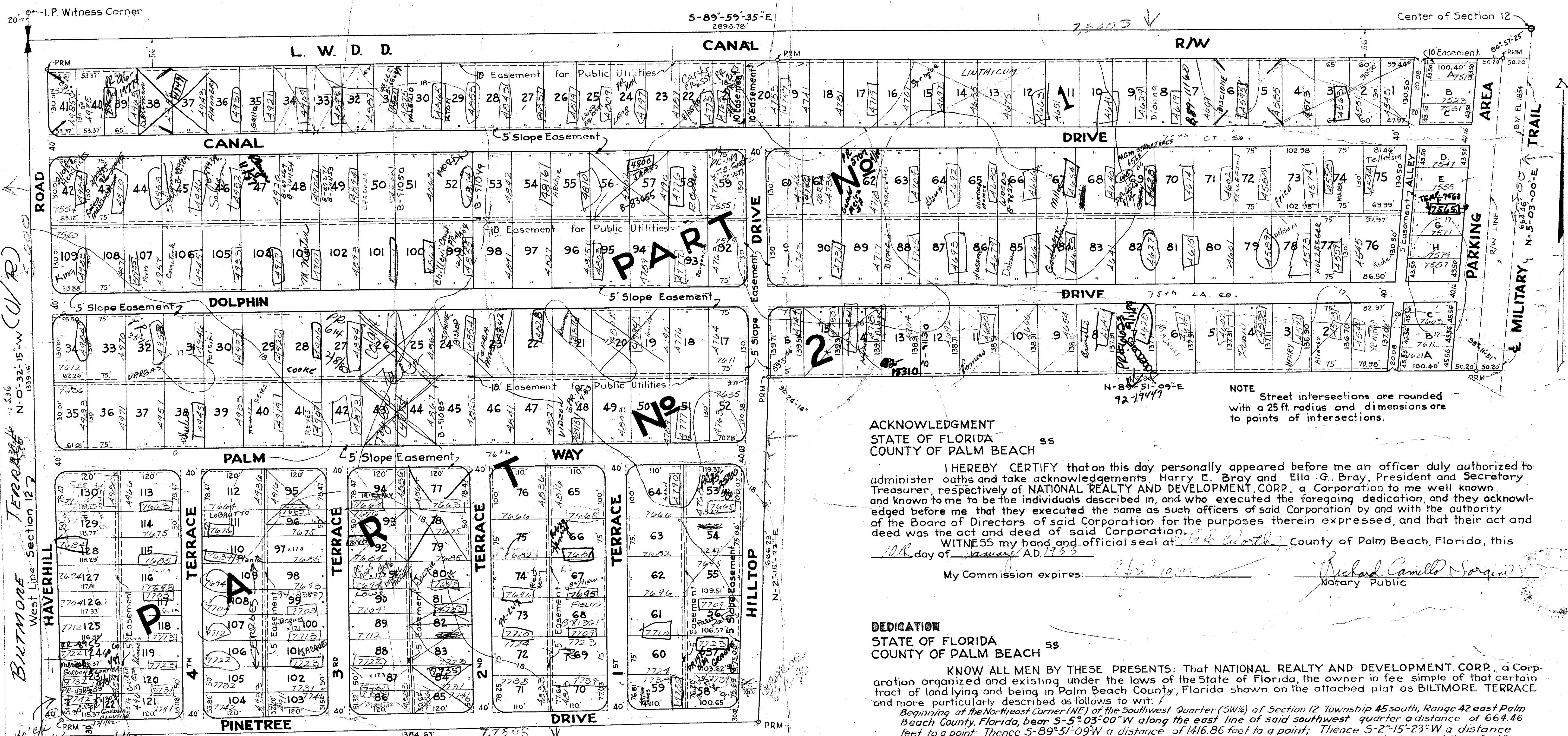
K.C. MOCK & ASSOCIATES ENGINEER & LAND SURVEYOR
LAKE WORTH, FLORIDA

SCALE 1"=100' JANUARY 1955

NOTE
Contour Elevations refer to M.S.L. Datum.
Building Set back lines to be 20 feet on
all Drives, Ways, Roads and Terraces

AR
FSZ 25
Quas 34
FH No

STATE OF FLORIDA
COUNTY OF PALM BEACH
This Plat was filed for record at 3:16 P.M.
this 21 day of Jan
1955 and duly recorded in Plat Book No.
241 on page 145
J. ALLEN ARMSTRONG, Clerk of Court
By *Richard Camillo Soriano*, D.C.



ACKNOWLEDGMENT
STATE OF FLORIDA ss
COUNTY OF PALM BEACH

I HEREBY CERTIFY that on this day personally appeared before me an officer duly authorized to administer oaths and take acknowledgements, Harry E. Bray and Ella G. Bray, President and Secretary Treasurer, respectively of NATIONAL REALTY AND DEVELOPMENT CORP., a Corporation to me well known and known to me to be the individuals described in, and who executed the foregoing dedication, and they acknowledged before me that they executed the same as such officers of said Corporation by and with the authority of the Board of Directors of said Corporation for the purposes therein expressed, and that their act and deed was the act and deed of said Corporation.

WITNESS my hand and official seal at Lake Worth County of Palm Beach, Florida, this 21 day of January AD 1955
My Commission expires: April 10, 1955
Richard Camillo Soriano
Notary Public

DEDICATION
STATE OF FLORIDA ss
COUNTY OF PALM BEACH

KNOW ALL MEN BY THESE PRESENTS: That NATIONAL REALTY AND DEVELOPMENT CORP., a Corporation organized and existing under the laws of the State of Florida, the owner in fee simple of that certain tract of land lying and being in Palm Beach County, Florida shown on the attached plat as BILTMORE TERRACE and more particularly described as follows to wit:
Beginning at the Northeast Corner (NE) of the Southwest Quarter (SW 1/4) of Section 12 Township 45 south, Range 42 east Palm Beach County, Florida, bear S-5°03'00"W along the east line of said southwest quarter a distance of 664.46 feet to a point; Thence S-89°51'09"W a distance of 1416.86 feet to a point; Thence S-2°15'-23"W a distance of 666.23 feet to a point; Thence S-89°41'-22"W a distance of 1384.63 feet to a point in the west line of said section 12. Thence N-0°-32'-15"W along the west line of section 12 a distance of 1339.16 feet to a point, said point being the W/4 Corner of said Section 12; Thence S-89°-59'-35"-E a distance of 2898.78 feet to the point of beginning EXCEPTING therefrom the right of way of Military Trail (S.R. No 809) and Lake Worth Drainage District Canal. Have caused the same to be surveyed and platted as shown hereon, and do hereby dedicate to the perpetual use of the public the Drives, Roads, Ways, Terraces, Alleys, Easements and Parking Areas shown on this plat, reserving however unto themselves, their heirs, successors, assigns or legal representatives, the reversion or reversions of same, whenever abandoned by the public or discontinued by law.

IN WITNESS WHERE OF: They have hereunto set their hands and seals this 21 day of January AD 1955
Harry E. Bray Seal
Ella G. Bray Seal
Witness
Witness

I HEREBY CERTIFY: That the tract of land shown hereon as BILTMORE TERRACE was surveyed and platted under my direction, that all measurements indicated are true and correct to the best of my knowledge and belief and that permanent reference monuments (P.R.M.) have been set as required by law.
K.C. Mock
Registered Engineer and Land Surveyor
Florida Certificates 4649-929

Plat Approved 21 Jan 1955
Roads will not be maintained by Palm Beach County
Board of County Commissioners
By *Neil Sweeney*
Chairman
By *Nepheal M. Sweeney*
County Engineer

DRAWING NUMBER

DRAWING NUMBER

DRAWING NUMBER

BILTMORE TERRACE

1000-507 12/45/42
29/145